

# MeanWHILE

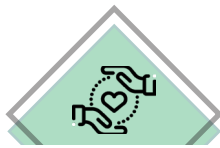
Innovation for Human

## - XuP-Med -

### Customer's profit



Maximise healthcare efficiencies



Reducing musculoskeletal disorders



Traceability of delivery material



Available 24/7



Safe



Secured cabinet



A.I. specialized in indoor navigation



Max Speed 4,8km/h

Emergency stop

Side laser

H.M.I.

Secured cabinet composed of 5 levels, each one equipped with removable tray

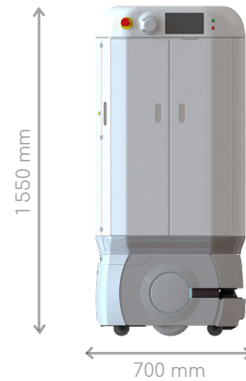
Rear sonar

Safety scanning laser

Low front laser

### XuP-Med's dimensions

∅ Diameter 700 mm



### XuP-Med's charging



Charging station

Autonomy 12 h

100-240 VAC

Charging ratio 5:1

### Features



Visual warning presence system



Pick-to-Light



RFID reader secured cabinet



Acuity localization



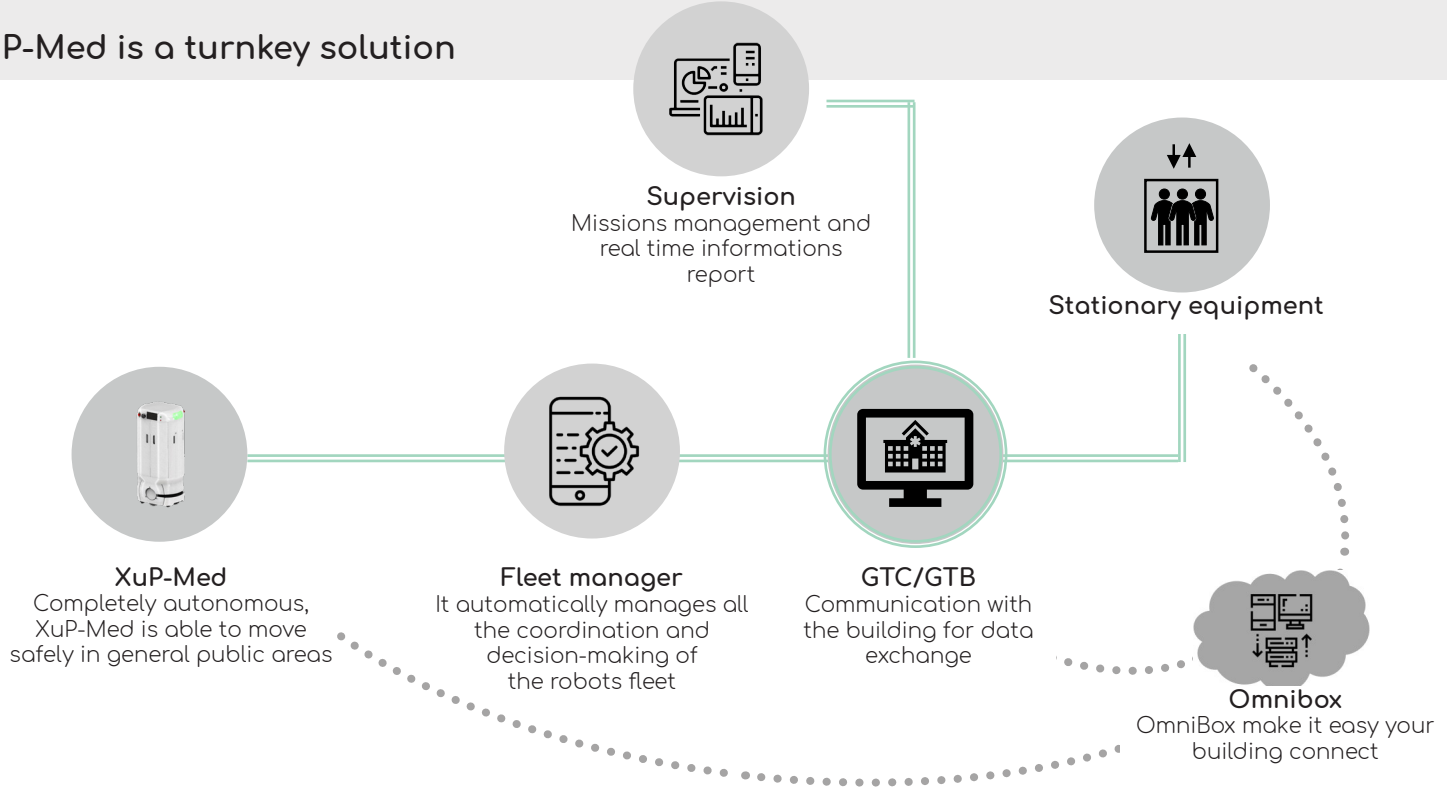
Automatic doors opener



Camera



## XuP-Med is a turnkey solution



### Application

In a CHRU, XuP-Med's mission is to rationalise the flow of samples by an automated distribution of tubes to the specialised sectors and the different teams of the laboratory. After entering an identification code, the laboratory technician places the samples to be analysed in the XuP-Med cabinet. Via the touch screen interface on the Cobot Mobile, the laboratory technician chooses the delivery destinations. Once the doors are closed, XuP-Med leaves to make its deliveries in complete autonomy. When approaching a delivery point, the Mobile Cobot signals its presence by emitting a sound and by switching on the luminous glass of the concerned room. After having identified himself on the interface, the recipient recovers his samples and the Mobile Cobot resumes its tour.



# Technical specifications

## XuP-Med

General	Maximum Speed	1.80m/s
	Dimension (L x W x h)	700 x 670 x 1550 mm (700mm diameter)
	Maximum overall weight	107 kg
Application	Application module	Secured cabinet
	Payload	15 kg
	Size of the embedded trays	A tray can hold up to 8 storage rack of 250 x 100 x 60 mm
Mobility	Navigation	Autonomous routing by localizing with safety scanning laser based on environment mapping
	Environmental map making method	Scan by walking the mobile robot through the environment
	Maximum rotation speed	180°/s
Safety	Safety scanning laser	at front Class 1 PLd safety per ISO 13841-1 15m maximum range 240° field of view
	Low front laser	1 at front Class 1 4m maximum range 126° field of view
	Side lasers	1 on each side of the platform Class 1 4m maximum range 270° field of view
	Emergency stop	2 on each side of the robot
	Rear sonar	2 at rear, 2m range
	Front bumper	1 at front of platform, 2 pairs of sensors
	Warning lights	Light discs on each side Upper LED strips
	Speaker and buzzer	3.5", 80W max

# Technical specifications

## XuP-Med

Human Interface	Touchscreen	7" TFT LCD screen, 800x480 pixels
	Manual Mode	Two push buttons to move the robot manually if necessary
Environnement	Operating temperature range	5 – 40°C
	Operating humidity range	5 – 95%
	Application environment	Indoor use only, limited dust and oil suspension
	IP Class	IP20
Floor specification	Floor requirement	Linoleum, epoxy or concrete (no water, no oil, no dust)
	Minimum floor flatness	F <sub>F</sub> 25
	Traversable step	Max : 10 mm
	Traversable gap	Max : 10 mm
	Climb grade	Max : 8%
Battery	Voltage	22-30 VDC LiFePO4
	Capacity	72 Ah nominal capacity
	Run time	± 12 hours
	Recharge time	± 4 hours
	Battery life cycles	2 000 recharge cycles
	Charging method	Automatic, manual
Communication	Wi-Fi	IEEE 802.11 a/b/g
	Bluetooth	Bluetooth 2.+ERD
Declarations	EC declaration of conformity	CE Marking